

EN-1 ROADBOND ROADBASE STABILIZER

THE COST EFFECTIVE ALTERNATIVE TO ASPHALT
RESURRECT OLD ROADS OR CONSTRUCT NEW ROADS
using the proven *EN-1 ROADBASE STABILIZER*.

This product allows you to *stretch your budget* and treat more municipal roads compared to laying asphalt.



ROAD BASE STABILIZER, EN-1, is a patented soil stabilizer that is specifically formulated to stabilize road base material on new or existing roads. EN-1 effectively bonds road base material to form a hard, durable, more durable road. A recent geological analysis reports that EN-1 accelerates the natural rock forming process and calls it one of the most important discoveries of the 20th century.

BENEFITS

Base stabilization has long been a proven method to increase road base strength, durability, and weight bearing capacity. However, stabilization has not always been affordable or practical. Road bond EN-1 changes that. Road bond EN-1 is very economical and easy to use. It requires no special equipment or extra steps to incorporate. Just dilute EN-1 with water and use the solution to wet the road base material. When properly applied EN-1 will increase the following characteristics of the road base:

- **STRENGTH**
- **COMPACTING**
- **DENSITY**
- **DURABILITY**
- **FLEXIBILITY**
- **DUST REDUCTION**

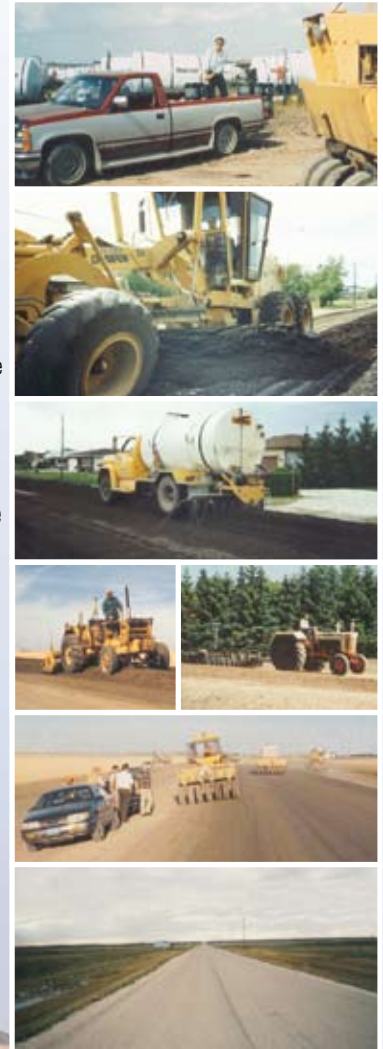
TESTED IN THE LAB...PROVEN IN THE FIELD:

When incorporated into the base material EN-1 dissolves the crystallized minerals and clay particles in the road base. When the road base cures, the minerals and clay re-crystallize to form a chemical bond between the remaining aggregate. Tests have shown that road base material treated with EN-1 is up to 50% stronger than the same untreated base material. This results in an improved base that will last longer and require less maintenance.

ENVIRONMENTAL ADVANTAGES

EN-1 is safe and easy to use. In diluted form EN-1 will not harm skin, clothing, equipment, vehicles, or vegetation. EN-1 is nontoxic and will not leach out on the road base.

- EN-1 is brought to the site in 5 gallon pails as a concentrate. Once the road area to be covered is determined, water is mixed with EN-1 for application. (1 gallon of EN-1 mixes with approx. 300 gallons of water.) 1 gallon of EN-1 when diluted treats 33 cubic yards of base material.
- Once sufficient* road base material is obtained, it is win-rowed to the middle. *If the necessary 6 inch minimum of base material is not available, additional aggregate will be required.
- The mixed EN-1 is now incorporated into the aggregate.
- If available, a rotovator incorporates the EN-1 into the aggregate. Otherwise, a grader can also be used to blade-mix the material.
- Recent projects have found the use of a disk works the best.
- Once the EN-1 has been incorporated into the material, it is win-rowed off to the side of the road, and brought over in 1 inch lifts. Packers then pass over the surface after each lift.
- It takes 7 days for the road to cure, and 28 days to cure completely. Anytime during the process, traffic is never diverted. A seal coat is the most economical and durable topping.



Stabilizing Roads In Manitoba For Over 16 Years.



938 McPhillips Road, St Andrews MB. R1A 4E7
Ph. (204) 785-2180 • Cell (204) 955-2937
Fax (204) 785-2728 • www.fortdistributors.com